

## WRA\_CKS-1W & WRB\_CKS-1W Series

### 1W, WIDE INPUT, ISOLATED & REGULATED DUAL/SINGLE OUTPUT SIP DC-DC CONVERTER

multi-country patent protection **RoHS**

#### FEATURES

- Wide (2:1) Input Range
- I/O Isolation 1500VDC
- Short circuit protection(automatic recovery)
- External On/Off control
- Internal SMD construction
- Operating Temperature: -40°C to +85°C
- Regulated Outputs
- UL94-V0 Package
- RoHS Compliance

#### APPLICATIONS

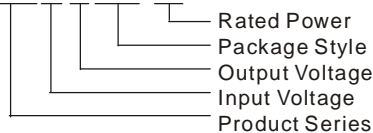
The WRA\_CKS-1W & WRB\_CKS-1W Series are specially designed for applications where a wide range input voltage power supplies are isolated from the input power supply in a distributed power supply system on a circuit board.

These products apply to:

- 1) Where the voltage of the input power supply is wide range (voltage range $\leq$  2:1);
- 2) Where isolation is necessary between input and output(isolation voltage $\leq$ 1500VDC);
- 3) Where the regulation of the output voltage and the output ripple noise are demanded.

#### MODEL SELECTION

WRA2412CKS-1W



#### PRODUCT PROGRAM

Part Number	Input			Output			Efficiency (% Typ)
	Voltage (VDC)			Voltage (VDC)	Current (mA)		
	Nominal	Range	Max**		Max	Min	
WRA0505CKS-1W *	5	4.5-9.0	11	±5	±100	±10	76
WRA0509CKS-1W *				±9	±55	±6	78
WRA0512CKS-1W *				±12	±42	±4	78
WRA0515CKS-1W *				±15	±33	±3	78
WRB0505CKS-1W *				5	200	20	76
WRB0509CKS-1W *				9	111	11	78
WRB0512CKS-1W *				12	83	8	78
WRB0515CKS-1W *				15	67	7	78
WRA1205CKS-1W *				12	9.0-18	22	±5
WRA1209CKS-1W *	±9	±55	±6				79
WRA1212CKS-1W *	±12	±42	±4				80
WRA1215CKS-1W *	±15	±33	±3				80
WRB1205CKS-1W *	5	200	20				78
WRB1209CKS-1W *	9	111	11				79
WRB1212CKS-1W *	12	83	8				80
WRB1215CKS-1W *	15	67	7				80
WRA2405CKS-1W *	24	18-36	40				±5
WRA2409CKS-1W *				±9	±55	±6	82
WRA2412CKS-1W *				±12	±42	±4	83
WRA2415CKS-1W *				±15	±33	±3	83
WRB2405CKS-1W *				5	200	20	78
WRB2409CKS-1W *				9	111	11	82
WRB2412CKS-1W *				12	83	8	83
WRB2415CKS-1W *				15	67	7	83
WRA4805CKS-1W *				48	36-72	80	±5
WRA4809CKS-1W *	±9	±55	±6				78
WRA4812CKS-1W *	±12	±42	±4				80
WRA4815CKS-1W *	±15	±33	±3				80
WRB4805CKS-1W *	5	200	20				76
WRB4809CKS-1W *	9	111	11				78
WRB4812CKS-1W *	12	83	8				80
WRB4815CKS-1W *	15	67	7				80

\* Designing.

\*\*Input voltage can't exceed this value, or will cause the permanent damage.

#### OUTPUT SPECIFICATIONS

Item	Test Conditions	Min	Typ	Max	Units
Output Voltage accuracy	Input voltage range refer to output load		±1	±3	%
Load Regulation	10% to 100% load(WRB_CKS-1W)		±0.5	±0.75	
	10% to 100% load(WRA_CKS-1W) *		±0.5	±1.0	
Line Regulation	Input voltage from Low To high		±0.2	±0.5	
Temperature Drift (Vout)	Refer to recommended circuit			±0.03	%/°C
Ripple & Noise	20MHz Bandwidth		25	75	mVp-p
Switching Frequency	Input voltage range 100% load	180-500(PFM)			KHz

\* Dual output models unbalanced load(25/100%): ±5%Max

#### MORNSUN America LLC

43 Broad Street  
Hudson, MA 01749  
Tel: 978-567-5610  
Fax: 978-567-9601  
[Http://www.mornsunamerica.com](http://www.mornsunamerica.com)

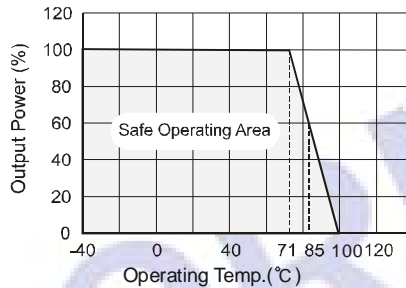
## COMMON SPECIFICATION

Item	Test Conditions	Min	Typ	Max	Units
Storage Humidity				95	%
Operating Temperature		-40		85	°C
Storage Temperature		-50		125	
Temp. Rise at Full Load			15	35	
Lead Temperature	1.5mm from case for 10 seconds			300	
Isolation voltage	Tested for 1 minute and 1mA max	1500			VDC
Isolation resistance	Test at 500VDC	1000			MΩ
Isolation Capacitance	100KHz,1V		35		PF
No-load power consumption			120		mW
Cooling		Free Air Convection			
Short Circuit Protection		Continuous, Automatic recovery			
Case Material		Plastic(UL94-V0)			
MTBF		1000			K hours
Weight			5		g

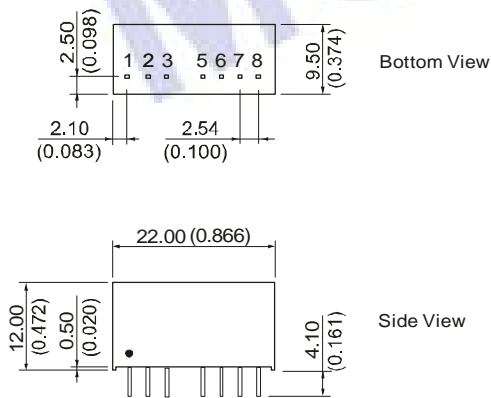
### Note:

- All specifications measured at  $T_A=25^{\circ}\text{C}$ , humidity<75%, nominal input voltage and rated output load unless otherwise specified.
- Test ripple and noise by "parallel cable" method. See detailed operation instructions at Testing of Power Converter section, application notes.
- Operation under 10% load will not damage the converter; However, they may not meet all specification listed.
- See below recommended circuits for more details.

## TYPICAL TEMPERATURE CURVE



## OUTLINE DIMENSIONS & FOOTPRINT DETAILS



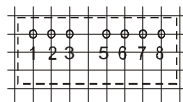
### Note:

Unit:mm(inch)  
 Pin section:0.50\*0.30mm(0.020\*0.012inch)  
 Pin section tolerances:±0.10mm(±0.004inch)  
 General tolerances:±0.25mm(±0.010inch)

First Angle Projection

RECOMMENDED FOOTPRINT  
 Top view,grid:2.54mm(0.1inch),  
 diameter:1.00mm(0.039inch)

Dual/Single Output



### FOOTPRINT DETAILS

Pin	Single	Dual
1	GND	GND
2	Vin	Vin
3	CTRL	CTRL
5	NC	NC
6	+Vo	+Vo
7	0V	0V
8	CS	-Vo

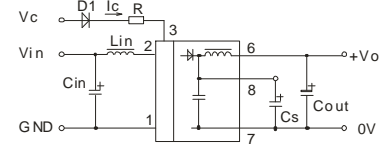
NC:No Connection

## APPLICATION NOTE

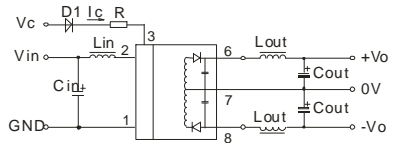
### Recommended circuit

If you want to further decrease the input/output ripple, an "LC" filtering network may be connected to the input and output ends of the DC/DC converter, see (Figure 1).

#### Single Output



#### Dual Output



(Figure 1)

However, the capacitance of the output filter capacitor must be proper. If the capacitance is too big, a startup problem might arise. For every channel of output, provided the safe and reliable operation is ensured, the greatest capacitance of its filter capacitor sees (Table 1). General:

Cin: 5V,12V 100μF  
 24V,48V 10uF  
 Cout: 47μF(typ)  
 Lin: 4.7μH -120μH  
 Lout: 2.2μH-10μH  
 Cs: 10uF-22uF

External Capacitor Table(Table 1)

Single Vout (VDC)	Cout (uF)	Dual Vout (VDC)	Cout (uF)
5	680	±5	330
9	560	±9	270
12	470	±12	220
15	330	±15	150

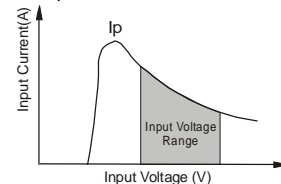
### CTRL Terminal

When open or high impedance,the converter work well; When this pin is 'high'; the converter shutdown; It should be note that the input current (Ic) should between 5-10mA, exceeding the maximum 20mA will cause permanence damage to the converter. The value of R Can be derived as follows :

$$R = \frac{V_C - V_D - 1.0}{I_c}$$

### Input current

While using unstable power source, please ensure the output voltage and ripple voltage do not exceed indexes of the converter. The preceding power source must be able to provide for converter sufficient starting current Ip (Figure 2).General:  $I_p \leq 1.4 \cdot I_{in-max}$



(Figure 2)

No parallel connection or plug and play.