

G_D-2W & H_D-2W Series

2W, FIXED INPUT, 6000V ISOLATED & UNREGULATED DUAL/SINGLE OUTPUT DC-DC CONVERTER

multi-country patent protection RoHS



FEATURES

- 6KVDC Isolation
- High Efficiency up to 81%
- DIP Package
- Temperature Range -40°C to +85°C
- No Heatsink Require
- Low Isolation capacitance
- Industry Standard Pinout
- Internal SMD Construction
- RoHS Compliance

APPLICATIONS

The G/H_D-2W Series are specially designed for applications where a group of polar power supplies are isolated from the input power supply in a distributed power supply system on a circuit board.

These products apply to:

- 1) Where the voltage of the input power supply is fixed (voltage variation $\leq \pm 10\%$);
- 2) Where isolation is necessary between input and output (isolation voltage $\leq 6000\text{VDC}$);
- 3) Where the regulation of the output voltage and the output ripple noise are not demanded.

Such as: purely digital circuits, ordinary low frequency analog circuits, and IGBT power device driving circuits.

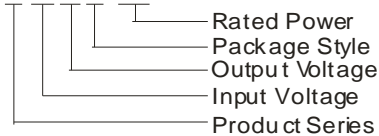
PRODUCT PROGRAM

Part Number	Input		Output			Efficiency (% Typ)	Certificate
	Voltage (VDC)		Voltage (VDC)	Current (mA)			
	Nominal	Range		Max	Min		
H0505D-2W	5	4.5-5.5	5	400	40	75	UL
H0509D-2W			9	222	23	76	UL
H0512D-2W			12	167	17	78	UL
H0515D-2W			15	133	13	77	UL
G0505D-2W			± 5	± 200	± 20	75	UL
G0509D-2W			± 9	± 111	± 12	77	UL
G0512D-2W			± 12	± 84	± 9	79	UL
G0515D-2W			± 15	± 67	± 7	78	UL
H1205D-2W	12	10.8-13.	5	400	40	75	UL
H1209D-2W			9	222	23	78	UL
H1212D-2W			12	167	17	80	UL
H1215D-2W			15	133	14	78	UL
G1205D-2W			± 5	± 200	± 20	76	UL
G1209D-2W			± 9	± 111	± 12	78	UL
G1212D-2W			± 12	± 84	± 9	80	UL
G1215D-2W			± 15	± 67	± 7	78	UL
H2405D-2W	24	21.6-26.4	5	400	40	77	
H2409D-2W			9	222	23	78	
H2412D-2W			12	167	17	81	
H2415D-2W			15	133	14	80	
G2405D-2W			± 5	± 200	± 20	77	
G2409D-2W			± 9	± 111	± 12	78	
G2412D-2W			± 12	± 84	± 9	81	
G2415D-2W			± 15	± 67	± 7	80	

Note: The G_D-1W/H_D-1W series also are available in our company.

MODEL SELECTION

G0505D-2W



MORNSUN America LLC

43 Broad Street
Hudson, MA 01749
Tel: 978-567-9610
Fax: 978-567-9601
<http://www.mornsunamerica.com>

ISOLATION SPECIFICATIONS

Item	Test Conditions	Min	Typ	Max	Units
Isolation voltage	Tested for 1 minute and 1mA max	6000			VDC
Isolation resistance	Test at 500VDC	1000			MΩ

COMMON SPECIFICATIONS

Item	Test Conditions	Min	Typ	Max	Units
Storage humidity				95	%
Operating temperature		-40		85	°C
Storage temperature		-55		125	
Temp. rise at full load			15	30	
Lead temperature	1.5mm from case for 10 seconds			300	
Short circuit protection		Continuous			
Cooling		Free air convection			
Case material		Plastic(UL94-V0)			
MTBF		3500			K hours
Weight			8.2		g

OUTPUT SPECIFICATIONS

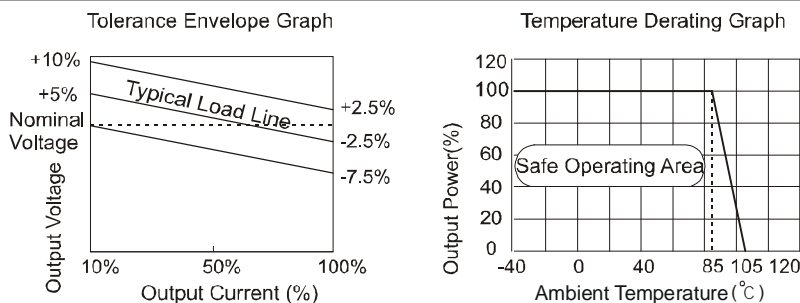
Item	Test conditions	Min	Typ	Max	Units
Output power		0.2		2	W
Line regulation	For Vin change of 1%			±1.2	
Load regulation	10% to 100% load	5V output	10	15	%
		9V output	8.3	15	
		12V output	6.8	15	
		15V output	6.3	15	
Output voltage accuracy	See tolerance envelope graph				
Temperature drift	100% full load			0.03	%/°C
Ripple & Noise*	20MHz Bandwidth		150	250	mVp-p
Switching frequency	Full load, nominal input	5V input		35	KHz
		12V,24V input		50	

*Test ripple and noise by "parallel cable" method. See detailed operation instructions at Testing of Power Converter section, application notes.

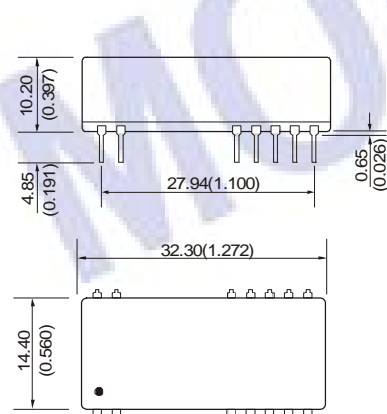
Note:

- All specifications measured at TA=25°C, humidity<75%, nominal input voltage and rated output load unless otherwise specified.
- Dual output models unbalanced load: ±5%.

TYPICAL CHARACTERISTICS



OUTLINE DIMENSIONS & PIN CONNECTIONS

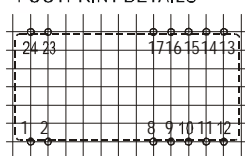


Note:
Unit:mm(inch)
Pin section:0.50*0.30mm(0.020*0.012inch)
Pin tolerances:±0.10mm(±0.004inch)
General tolerances:±0.25mm(±0.010inch)

First Angle Projection

RECOMMENDED FOOTPRINT
Top view, grid:2.54*2.54mm(0.1*0.1inch)
diameter:1.00mm(0.039inch)

FOOTPRINT DETAILS

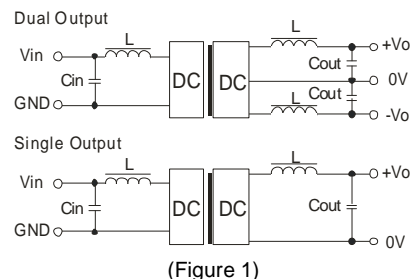


FOOTPRINT DETAILS

Pin	Single	Dual
1	Vin	Vin
2	GND	GND
8、17	NC	-Vo
10、15	0V	0V
12、13	+Vo	+Vo
Others	NC	NC

Recommended testing and application circuit

If you want to further decrease the input/output ripple, an "LC" filtering network may be connected to the input and output ends of the DC/DC converter, see (Figure 1).



It should also be noted that the inductance and the frequency of the "LC" filtering network should be staggered with the DC/DC frequency to avoid mutual interference. However, the capacitance of the output filter capacitor must be proper. If the capacitance is too big, a startup problem might arise. For every channel of output, provided the safe and reliable operation is ensured, the greatest capacitance of its filter capacitor sees (Table 1).

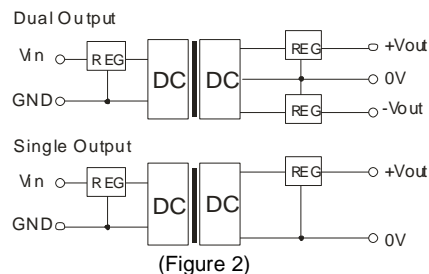
EXTERNAL CAPACITOR TABLE (Table 1)

Vin (VDC)	Cin (uF)	Single Vout (VDC)	Cout (uF)	Dual Vout (VDC)	Cout (uF)
5	4.7	5	10	±5	4.7
12	2.2	9	4.7	±9	2.2
24	1	12	2.2	±12	1
-	-	15	1	±15	1

It's not recommended to connect any external capacitor in the application field with less than 0.5 watt output.

Output Voltage Regulation and Over-voltage Protection Circuit

The simplest device for output voltage regulation, over-voltage and over-current protection is a linear voltage regulator with overheat protection that is connected to the input or output end in series (Figure 2).



Overload Protection

Under normal operating conditions, the output circuit of these products has no protection against overload. The simplest method is to connect a self-recovery fuse in series at the input end or add a circuit breaker to the circuit.

No parallel connection or plug and play.

APPLICATION NOTE

Requirement on output load

To ensure this module can operate efficiently and reliably, During operation, the minimum output load is not less than 10% of the full load, and that this product should **never be operated under no load!** If the actual output power is very small, please connect a resistor with proper resistance at the output end in parallel to increase the load, or use our company's products with a lower rated output power. (G/H_D-1W Series)